

## Message from Mrs Horton

A big welcome back to all. It is really lovely to see all the children again, very smart and a little bit taller.

At the beginning of a new year, there are always changes to get used to but many things remain the same. We strive to build as much continuity as possible into the children's school experience to foster a sense of belonging and to help them feel safe, happy and ready to learn.

This week has been all about getting settled in to new classrooms and getting to know new teams.

Next week, this term's themes will be launched. The themes are used to provide an engaging context through which to develop the skills of the primary curriculum.

There will also be a chance to visit your child's classroom and meet the teaching team – see page 2 for information about 'Meet the Teacher'.

Take a look at the upcoming events on the right and you will see how much is already planned for this half term!

Please take time to read the message from Mr Bond – there have been some significant changes to the rules about attendance set by the Department for Education. Families will benefit from understanding the new expectations. Please ask Mr Bond, Miss Baverstock or myself in the playground if you have any questions.

### In the Newsletter today:

P1- Message from Mrs Horton, dates; P2- 'Meet the Teacher' and teaching teams; P3 – A message from Mr Bond - Attendance; P4 – Autumn 1 Themes; P5 – Friends Of Hargrave Park; P6 - online safety; P7 -Attendance Matters; P8 – term dates 24/25

## Upcoming events

### Week beginning 9<sup>th</sup> September

Mon 9 <sup>th</sup>	Meet the teacher: Nursery and Pink Class
Tues 10 <sup>th</sup>	Meet the teacher: Blue, Green and Red Class
Wed 11 <sup>th</sup>	School Photos
	Meet the teacher: Orange, Lime and Purple Class
Thurs 12 <sup>th</sup>	Meet the teacher: Violet, Cyan and Indigo Class
Fri 13 <sup>th</sup>	Friends of Hargrave Park Coffee Morning

### Week beginning 16<sup>th</sup> September

Watch this space...!

### Week beginning 23<sup>rd</sup> September

Wed 25 <sup>th</sup>	Fluoride varnish team in school
Thurs 26 <sup>th</sup>	Sophie Izzard from Bright Futures in school

### Week beginning 30<sup>th</sup> September

Mon 30 <sup>th</sup>	Lime Class - Hampstead Heath Stone Age Workshop
Tues 1 <sup>st</sup>	Orange Class - Hampstead Heath Stone Age Workshop Year 5 and 6 Boys football competition
Wed 2 <sup>nd</sup>	Purple Class - Hampstead Heath Stone Age Workshop Cyan Class to British Library

### Week beginning 7<sup>th</sup> October

Mon 7 <sup>th</sup>	Violet Class to British Library
Tues 8 <sup>th</sup>	Indigo Class to British Library
Thur 10 <sup>th</sup>	Flu Vaccine – Reception to year 6

### Week beginning 14<sup>th</sup> October

Mon – Fri	Violet Class Swimming
Fi 18 <sup>th</sup>	Sophie Izzard from Bright Futures in school

### Week beginning 21<sup>st</sup> October

Mon – Fri	Purple Class Swimming
Mon – Fri	Year 6 to Cardfields
Mon – Thur	Year 5 Bikeability
Thurs 24 <sup>th</sup>	'Spooky and Sparkly' disco

### Week beginning 28<sup>th</sup> October – Half term break

### Week beginning 4<sup>th</sup> November

Mon 4 <sup>th</sup>	INSET day – school closed to children
---------------------	---------------------------------------

## Meet the Teacher!

You all received a letter on Tuesday inviting you to 'Meet the teacher'! This is a chance to visit your child's new classroom and meet the teaching team.

You will find out more about routines and expectations including communication, homework, uniform, Seesaw and Tapestry.

You will also be able to ask questions to the class teacher and TA if there is anything specific you are unsure about or want more information about.

## Meet the Teacher Timings

**Monday 9<sup>th</sup> September**

3:40 – 4:00 p.m. Nursery and Pink Class

**Tuesday 10<sup>th</sup> September**

3:40 – 4:00 p.m. Blue, Green and Red Class

**Wednesday 11<sup>th</sup> September**

3:40 – 4:00 p.m. Orange, Lime and Purple Class

**Thursday 12<sup>th</sup> September**

3:40 – 4:00 p.m. Violet, Cyan and Indigo Class

Please note - If your child attends HP House or HP Cabin you will get a chance to visit those classrooms in the week beginning 16<sup>th</sup> September. You will be contacted individually.

## Classes and teaching teams September 2024

### EYFS and Key Stage 1

Nursery: *Carla, Danni, Carolin, Petra*

Pink Class – Reception: *Nilsu Bulut and Charley Dixon*

Blue Class – Reception and Year 1: *Georgia Cottington and Ema Gaywood*

Green Class – Year 1 and 2: *Georgina McNamara and Kulsuma Khanom*

Red Class – Year 2: *Emily Thomas and Kim Fosbrook*

### Key Stage 2

Orange Class – Year 3: *Jamie Harney*

Lime Class – Year 3 and 4: *Juliet Makima*

Purple Class – Year 4: *Ines Fernandez*

Orange, Lime and Purple Classes are smaller and share *Bobbie-Jo Jago* and *Folami Lawrence* as teaching assistants

Violet Class – Year 5: *Sophie Gaston and Lynda Piggot*

Cyan Class – Year 5 and 6: *Ben Hagan and Lorraine Stannard*

Indigo Class – Year 6: *Zoe Nadarajah and Pauline Chisolm*

Good attendance and punctuality are both very important for your child's wellbeing and progress. Please see below for some important updates and reminders.

This academic year, there have been significant changes to the attendance rules set out by the Department For Education.

Please read the below for your information:

### How much could I be fined if my child misses school?

In the majority of cases, schools and local authorities will try and provide support to help you improve your child's attendance first, but if this isn't effective or the absence is for unauthorised term time holiday, parents may face paying a fine.

It's the responsibility of the local authority to decide when to issue fines to parents, meaning the process varies from council to council.

However, under the national rules, all schools are required to consider a fine when a child has missed 10 or more sessions (5 days) for unauthorised reasons.

From August 2024, the fine for school absences across the country will be **£80 if paid within 21 days, or £160 if paid within 28 days**. This rate is in line with inflation and is the first increase since 2012.

In the case of repeated fines, if a parent receives a second fine for the same child within any three-year period, this will be charged at the higher rate of £160.

Fines per parent will be capped to two fines within any three-year period. Once this limit has been reached, other action like a parenting order or prosecution will be considered.

If you're prosecuted and attend court because your child hasn't been attending school, you could get a fine of up to £2,500.

### School Timings

8 - 8.40 a.m. Breakfast Club

8.40 – 9 a.m Soft start

9 a.m. Register  
(arrivals after this time will be marked as late)

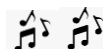
3.30 p.m. Collection time

3.30-5.30 p.m. After School Club

5.30-6 p.m. After School Club 'plus'  
(*parents/carers must apply*)

### Reward

We will soon be arranging rewards for pupils who achieved 97%+ attendance last academic year. KS1 & KS2 will have different rewards to celebrate...



**ODEON**

### Holiday reminder

Improving attendance continues to be a priority. We work alongside our Education Welfare Officer to develop and maintain systems to support attendance. Holidays taken during term time are not authorised and will likely result in a fine.

## Nursery

This half term our theme for learning is Monsters, where we will be exploring feelings and emotions through a range of monster stories.

Some of the texts we will be exploring include: The Colour Monster, Where the Wild Things Are, The Gruffalo and Not Now Bernard.



## LKS2 – Meet The Flintstones!

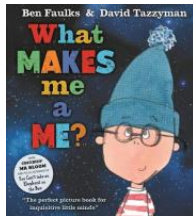
Years 3 and 4 children will explore what life was like during The Stone Age and what artefacts can tell us about this period of history.

How accurate was The Flintstones in depicting Stone Age life? We will investigate!



## Reception and KS1

Reception and Years 1 and 2 will be learning why it's Good to be Me which will be about everything that makes us unique and special. We will explore our similarities, differences and how we have changed during our lives from babies, toddlers and children, linked to our core driver PSHE.



## UKS2 – Mexico and The Maya

Years 5 and 6 will research The Mayan civilisation and find out about the many discoveries they have been accredited for! Classes will also explore the physical and human geography of modern day Mexico and how this varies both internally and to other parts of The World.





Our Parent and Staff Association

## Friends of Hargrave Park School

 Want to get in touch? Email us at: [friendsofhargravepark@gmail.com](mailto:friendsofhargravepark@gmail.com)

Every parent and carer of a child at the school, as well as staff, are automatically a member of Friends of Hargrave Park School.

Run by a committee of parent volunteers, we organise events and activities that aim to build the school community and raise funds to help enhance all Hargrave children's experience of school life.

Being part of the committee or becoming a class rep is a great way to get to know other families while supporting the school.

Contact Mayani and the team on [friendsofhargravepark@gmail.com](mailto:friendsofhargravepark@gmail.com)

## Hello and welcome back!

Friends of Hargrave Park is the school's parent and staff association. We organise events to bring the school community together through the year and raise money to enhance all our children's experience of school life.

Last year, thanks to the generosity of Hargrave families and staff, we raised over £3,700 allowing us to provide new music equipment for the school and subsidise the coaches for the school trip to Frinton.



### Stay connected with your class family Join the class WhatsApp group

From Nursery to Indigo each class has a parent/carer WhatsApp helping you connect with other families in your child's class. The groups are great for date reminders, holiday meet-ups, and the odd question on home learning. Look out for email with details how to join your group or email us for the link. *Please note these groups are independent from the school and teachers.*

### You are invited to our Coffee Morning Friday 13 September, 8.45-9.30



Join us in the school Hub on Friday morning for a chance to have a cuppa and a chat with other parents and carers. We'll meet in reception after drop off before heading up to the Hub together. This is free event and babies and toddlers are welcome.



### Upcoming Event Dates for your Diary

Friday 13 September - 8.45-9.30  
Parent & Carer Coffee Morning

Monday 7 October  
Autumn Cupcake Sale

Thursday 24 October  
Sparkly and Spooky Disco

Monday 18 November  
Winter Cupcake Sale

Tuesday 17 December  
Winter Fair & Santa's Grotto

Coming up  
★ Friends Quiz Night  
★ School Lottery  
★ Dare to be Different Day



internet  
matters.org

## Online Safety



Getting back in to school routines can be a challenge!

Bedtime routines are particularly important – getting enough sleep will help your child be ready to get the most out of school. Sometimes screen time can get in the way!

We recommend a family agreement such as this one from ‘Internet Matters’ [digital-family-agreement-template](#) to support conversations and agreement on how much time can be spent on devices, and ground rules like no phones at the dinner table or in the bedroom at night-time.

Shared expectations will reduce arguments and keep everyone safe & healthy.

Internet Matters have created an ABC checklist to support online safety - [abc-online-safety-checklist](#)

Explore Internet Matters for more resources to support online safety in the home.  
<https://www.internetmatters.org/resources/>

# Supporting your child's attendance

## Your child can attend school with...

Toothache  
Earache  
Headache  
Sore throat  
Conjunctivitis  
Glandular Fever  
Head lice  
Molluscum Contagiosum (viral skin condition)  
Ringworm  
Threadworm  
Warts and Verrucae  
Cough/Cold – If your child has asthma, remember they may need their blue inhaler more often  
Hand, Foot and Mouth

A raised  
temperature  
is over  
**37.5**

Please make sure that all contact details are up to date in case your child is not well enough to stay in school.

## If your child has been diagnosed with the following:

**Chicken pox** – Child can return to school once all spots have crusted over  
**Diarrhoea and vomiting** – can return to school **48 hours from the last episode** of diarrhoea or vomiting

**Influenza (flu)** – Children should return to school as soon as they have recovered

**German Measles (Rubella)** – Keep off of school for 6 days from onset of rash

**Impetigo** – Keep off of school until lesions are crusted/healed, or 48 hours after starting antibiotic treatment.

**Measles** – Keep child off of school for 4 days from the onset of rash

**Mumps** – Keep off of school for 5 days from onset of swollen glands

**Scabies** – Child can return after first treatment

**Whooping cough** – 5 days from starting antibiotic treatment, or 21 days from onset of illness if no antibiotic treatment has been given.

**Doctors notes will be required for all of the above**

Appointments  
to be made  
after school

## Medication in School

If your child has prescribed medication eg asthma pump, epi-pen, buccolam or antibiotics a form must be completed on the Piota app.

You may be asked to complete a medical care plan and provide supporting documents.

**All medication needs to be handed in to the school office.**

## Bumped Heads

If your child has bumped their head, you will only be called if your child complains of feeling sick, dizziness and/or headache. A message will be sent home via text or email informing you if they did bump their head during the day

Email your appointment letters to: [parents@hargravepark.islington.sch.uk](mailto:parents@hargravepark.islington.sch.uk)

If your child is ill, please call 020 7272 3989 choose option 1 to report your child's absence

August 2024							
Wk	Mo	Tu	We	Th	Fr	Sa	Su
31				1	2	3	4
32	5	6	7	8	9	10	11
33	12	13	14	15	16	17	18
34	19	20	21	22	23	24	25
35	26	27	28	29	30	31	

September 2024							
Wk	Mo	Tu	We	Th	Fr	Sa	Su
35							1
36	2	3	4	5	6	7	8
37	9	10	11	12	13	14	15
38	16	17	18	19	20	21	22
39	23	24	25	26	27	28	29
40	30						

October 2024							
Wk	Mo	Tu	We	Th	Fr	Sa	Su
40		1	2	3	4	5	6
41	7	8	9	10	11	12	13
42	14	15	16	17	18	19	20
43	21	22	23	24	25	26	27
44	28	29	30	31			

November 2024							
Wk	Mo	Tu	We	Th	Fr	Sa	Su
44					1	2	3
45	4	5	6	7	8	9	10
46	11	12	13	14	15	16	17
47	18	19	20	21	22	23	24
48	25	26	27	28	29	30	

December 2024							
Wk	Mo	Tu	We	Th	Fr	Sa	Su
48							1
49	2	3	4	5	6	7	8
50	9	10	11	12	13	14	15
51	16	17	18	19	20	21	22
52	23	24	25	26	27	28	29
1	30	31					

January 2025							
Wk	Mo	Tu	We	Th	Fr	Sa	Su
1			1	2	3	4	5
2	6	7	8	9	10	11	12
3	13	14	15	16	17	18	19
4	20	21	22	23	24	25	26
5	27	28	29	30	31		

February 2025							
Wk	Mo	Tu	We	Th	Fr	Sa	Su
5						1	2
6	3	4	5	6	7	8	9
7	10	11	12	13	14	15	16
8	17	18	19	20	21	22	23
9	24	25	26	27	28		

March 2025							
Wk	Mo	Tu	We	Th	Fr	Sa	Su
9						1	2
10	3	4	5	6	7	8	9
11	10	11	12	13	14	15	16
12	17	18	19	20	21	22	23
13	24	25	26	27	28	29	30
14	31						

April 2025							
Wk	Mo	Tu	We	Th	Fr	Sa	Su
14		1	2	3	4	5	6
15	7	8	9	10	11	12	13
16	14	15	16	17	18	19	20
17	21	22	23	24	25	26	27
18	28	29	30				

May 2025							
Wk	Mo	Tu	We	Th	Fr	Sa	Su
18				1	2	3	4
19	5	6	7	8	9	10	11
20	12	13	14	15	16	17	18
21	19	20	21	22	23	24	25
22	26	27	28	29	30	31	

June 2025							
Wk	Mo	Tu	We	Th	Fr	Sa	Su
22							1
23	2	3	4	5	6	7	8
24	9	10	11	12	13	14	15
25	16	17	18	19	20	21	22
26	23	24	25	26	27	28	29
27	30						

July 2025							
Wk	Mo	Tu	We	Th	Fr	Sa	Su
27		1	2	3	4	5	6
28	7	8	9	10	11	12	13
29	14	15	16	17	18	19	20
30	21	22	23	24	25	26	27
31	28	29	30	31			

School Holidays

Inset Days

### Bank holidays 2024/25 UK

26 August '24 August Bank Holiday  
25 December '24 Christmas Day

26 December '24 Boxing Day  
1 January '25 New Year's Day

18 April '25 Good Friday  
21 April '25 Easter Monday

5 May '25 Early May Bank Holiday  
26 May '25 Spring Bank Holiday